

# SHOULDER SHRUGS

For the Summer 2005 *Interweave Knits* staff project (page 92), we chose to knit shrugs—those versatile, comfortable alternatives to sweaters and shawls. Simple to make and fun to wear, shrugs are the perfect summer accessory. Here are instructions for our variations.



## RIBBED SHRUG PAM ALLEN, EDITOR-IN-CHIEF

I wanted to make a feminine piece that wasn't over-the-top girly. A rayon-blend yarn with a beautiful drape, a short ruffle, and expandable ribs seemed like a good combination for a simple piece that works well with a dress or jeans.

**Finished Size** 6½" (16.5 cm) wide at center back, unstretched, and 40" (101.5 cm) long from cuff to cuff. Ribbed pattern expands to fit most wearers.

**Yarn** Patons Katrina (92% rayon, 8% polyester; 163 yd [150 m]/100 g): #10425 dusk (pink), 3 balls.

**Needles** Size 10½ (6.5 mm): 24" (60-cm) circular (cir). Adjust needle size if necessary to obtain the correct gauge.

**Notions** Tapestry needle.

**Gauge** 28 sts and 24 rows = 4" (10 cm) in rib patt, unstretched.

### Shrug

CO 134 sts. Do not join into a rnd. Work k1, p1 rib for 6 rows. *Dec row:* (RS) K1, \*k3tog; rep from \* to last st, k1—46 sts rem. *Next row:* (WS) \*P1, k1; rep from \*. Cont in rib as established until piece measures 39" (99 cm) from beg, ending with a WS row. *Inc row:* (RS) K1, \*(k1f&sb, k1) in same st (3 sts made from 1 st); rep from \* to last st, k1—134 sts. *Next row:* (WS) \*P1, k1; rep from \*. Cont in rib as established for 5 more rows. BO all sts in rib.

### Finishing

With yarn threaded on a tapestry needle, sew from the edge of each ruffle towards the center for 11½" (29 cm) for sleeves, leaving center 17" (43 cm) open. Weave in loose ends. Do not block.



## POPCORN SHRUG ANN BUDD, SENIOR EDITOR

I don't normally gravitate toward novelty yarn, but the odd texture in this yarn intrigued me. To keep the focus on the yarn, I purposefully kept the stitch pattern and shaping simple—I knitted a rectangle in garter stitch. But I just couldn't keep myself from working the short ends (what would become the "cuffs") on progressively larger needles to give them a little flair.

**Finished Size** About 35" (89 cm) long from cuff to cuff, 14" (35.5 cm) circumference at cuff, and 10" (25.5 cm) wide at center back.

**Yarn** Gerfil Twingo (100% nylon; 131 yd [120 m]/50 g): #10803 orange, 2 balls. Yarn distributed by Plassard.

**Needles** Sizes 19 (15 mm), 17 (12 mm), 15 (10 mm), and 13 (9 mm): straight. Adjust needle size if necessary to obtain the correct gauge.

**Notions** Tapestry needle.

**Gauge** 14 sts and 20 rows = 4" (10 cm) in garter st on smallest needles.

### Shrug

With size 19 needles, CO 36 sts. Work garter st for 6 rows—piece should measure about 1¼" (4.5 cm) from beg. Change to size 17 needles and work garter st for 6 more rows—piece should measure about 3½" (9 cm) from beg. Change to size 15 needles and work garter st for 6 more rows—piece should measure about 5" (12.5 cm) from beg. Change to size 13 needles and cont in garter st until piece measures about 30" (76 cm) from beg. Change to size 15 needles and work garter st for 6 rows. Change to size 17 needles and work garter st for 6 more rows. Change to size 19 needles and work garter st for 6 more rows—piece should measure about 35" (89 cm) from beg. Loosely BO all sts.

### Finishing

Fold piece in half lengthwise. With yarn threaded on a tapestry needle, sew the two sides tog for about 4½" (11.5 cm) from each short end toward the center to make "sleeves," leaving the center 26" (66 cm) open. Weave in loose ends.



## CABLED SHRUG MARY JANE MUCKLESTONE, PHOTOSTYLIST

For this shrug, I took inspiration from the tiny bodices worn during the Regency period, particularly Kate Greenaway drawings, the Empress Josephine, and the movie *Vanity Fair*. I simply knit two three-quarter-length sleeves (decorated with delicate cables) that increase in width to form a small elegant bodice, then grafted them together with a Kitchener stitch. I used one of my favorite brooches from my grandmother's jewelry box to fasten the shrug at the bust.

**Finished Size** 11" (28 cm) high at center back and 44" (112 cm) long from cuff to cuff. Sized for a close, body-conscious fit.

**Yarn** South West Trading Company Oasis (100% soy silk; 240 yd

[219 m]/100 g): #502-white, 5 balls.

**Needles** Sizes 5 (3.75 mm) and 6 (4 mm). Adjust needle size if necessary to obtain the correct gauge.

**Notions** Stitch holders; marker (m); cable needle (cn); tapestry needle.

**Gauge** 21 sts and 28 rows = 4" (10 cm) in St st on larger needles.

### Stitch Guide

**Cable Pattern:** (worked over 6 sts)

Rows 1 and 5: (RS) P1, k4, p1.

Rows 2, 4, and 6: K1, p4, k1.

Row 3: P1, sl 2 sts onto cable needle (cn) and hold in front, k2, k2 from cn, p1.

Repeat Rows 1–6 for pattern.

### Left Half

With smaller needles, CO 42 sts. Work k1, p1 rib until piece measures 2" (5 cm), ending with a WS row. Gradually transition from k1, p1 rib to St st as foll:

Row 1: (RS) K6, work center 30 sts in established rib, k6.

Rows 2 and 4: Work sts as they appear (knit the knit sts and purl the purl sts).

Row 3: K12, work center 18 sts in rib, k12.

Row 5: K18, work center 6 sts in rib, k18.

Row 6: Work sts as they appear.

Change to larger needles and establish patts as foll: (RS) Work 18 sts in St st, place marker (pm), work center 6 sts as for Row 1 of cable patt (see Stitch Guide), pm, work 18 sts in St st. Work 3 rows even in patt, ending with Row 4 of cable patt. **Shape sleeve:** Cont in patt, inc 1 st each end of needle on next RS row—44 sts. Work 5 rows even in patt. Cont in patt, rep the shaping of the last 6 rows 9 more times, working inc'd sts in St st and ending with a WS row—62 sts; piece should measure about 11" (28 cm) from beg. Cont in patt, and beg with the next RS row, inc 1 st each end of needle every RS row 15 times, then work 1 WS row even—92 sts. At beg of next 2 rows, use cable method (see page 5) to CO 14 sts—120 sts; piece should measure about 15½" (39.5 cm) from beg. Set up rib patt at each side as foll: (RS) Sl 1 purlwise (pw) with yarn in back (wyb), [k1, p1] 5 times, work in patt to last 11 sts, [p1, k1] 5 times, k1. Cont in this manner, slipping the first st of every row, knitting the last st, and working rib, cable, and St st patts as established until piece measures 20" (51 cm) from beg, or about 4½" (11.5 cm) from last CO row, ending with a WS row. **Divide for front and back:** Work across first 60 sts in patt for back, place rem 60 sts on holder for front; the division should be exactly in the center of the 6-st cable panel. **Back:** (WS) Sl 1, p1, k1, p2tog, work to end in established patts—1 st dec'd. Working RS rows even, rep last WS row 2 more times—57 sts rem. Work 8 rows even—piece should measure about 2" (5 cm) from dividing row. Place sts on holder. **Front:** Return 60 held front sts to needle. Join yarn with RS facing, BO first 16 sts, work in patt to end—44 sts rem. Work 1 WS row even. **Next row:** (RS) Sl 1, ssk, work in patts to end—1 st dec'd. Work 1 WS row even. Rep the last 2 rows 13 more times, ending with a WS row—30 sts rem; piece should measure about 24¼" (61.5 cm) from beg, or 4¼" (11 cm) from dividing row. **Next row:** (RS) [K3tog] 10 times—10 sts rem. Purl 1 row. **Next row:** [K2tog] 5 times—5 sts rem. BO all sts.

### Right Half

Work as for left half until piece measures 20" (51 cm) from beg, or about 4½" (11.5 cm) from last CO row, ending with a WS row—120 sts. **Divide for front and back:** Work across first 60 sts in patt for front, place rem 60 sts on holder for back; the division should be exactly in the center of the 6-st cable panel. **Front:** (WS) BO first 16 sts, work in patt to end—44 sts rem. **Next row:** (RS) Work in patt to last 3 sts, k2tog, k1—1 st dec'd. **Next row:** (WS) Sl 1, work in patts to end. Rep the last 2 rows 13 more times—30 sts rem; piece should measure about 24¼" (61.5 cm) from beg, or 4¼" (11 cm) from dividing row. Complete as for left front. **Back:** Return 60 held back sts to needle with RS facing and join yarn. **Next row:** (RS) Sl 1, k1, p1, ssk, work to end in patt—1 st dec'd. Working WS rows even, rep the last RS row 2 more times—57 sts rem. Work 9 rows even in patt, ending with a WS row—piece should measure about 2" (5 cm) from dividing row. Place sts on holder.

### Finishing

With yarn threaded on a tapestry needle, use the Kitchener st (see page 5) to graft live sts tog at center back. Sew sleeve seams. Weave in loose ends. Overlap fronts for desired fit and close with a decorative pin or brooch.



**DROP-STITCH SHRUG**  
MEEMA SPADOLA,  
CONTRIBUTING EDITOR

I wanted to use an open stitch pattern for this shrug to show off the luscious color and sheen of this silk-merino yarn. I settled on a drop-stitch pattern that has an organic feel, reminding me of tree bark or even-flowing water. The way the

shrug fits on the body means that the pattern appears vertical on the sleeves and horizontal across the back. To simplify the task of working increased stitches into the unsymmetrical pattern, I let the ribs become the border.

**Finished Size** About 8" (20.5 cm) wide at center back with ribbing relaxed and 57" (145 cm) long from cuff to cuff.

**Yarn** Alchemy Synchronicity (50% silk, 50% merino, 110 yd [101 m]/50 g); #041F vermillion, 6 skeins.

**Needles** Size 5 (3.75 mm). Adjust needle size if necessary to obtain the correct gauge.

**Notions** Markers (m); tapestry needle.

**Gauge** 33½ sts and 27½ rows = 4" (10 cm) in drop-stitch patt with ribs relaxed; 38½ sts and 27½ rows = 4" (10 cm) in k2, p2 rib with ribs relaxed.

### Stitch Guide

**Drop-Stitch Pattern with Edging:** (CO a multiple of 8 sts + 4 + 6 sts for edging; increase to a multiple of 9 sts + 4 + 6 sts for a edging to work Rows 1–12)

**Note:** The shrug has 3 edging stitches worked outside the markers at each side.

**Set up row:** (RS) Sl 1 purlwise with yarn in front (pwise wyf), p2, place marker (pm), k1, \*p2, k1, yo, k1, p2, k2; rep from \* to

last 6 sts, p2, k1, pm, p2, k1.

**Rows 1, 3, and 5:** (WS) Sl 1 pwise wyf, k2, slip marker (sl m), p1, \*k2, p2, k2, p3; rep from \* to last 3 sts before m, k2, p1, sl m, k3.

**Rows 2 and 4:** (RS) Sl 1 pwise wyf, p2, sl m, k1, \*p2, k3, p2, k2; rep from \* to 3 sts before m, p2, k1, sl m, p2, k1.

**Row 6:** Sl 1 pwise wyf, p2, sl m, k1, \*p2, k1, drop next st off needle and allow it to ravel down to yo six rows below, k1, p2, k1, yo, k1; rep from \* to 3 sts before m, p2, k1, sl m, p2, k1.

**Rows 7, 9, and 11:** Sl 1 pwise wyf, k2, sl m, p1, \*k2, p3, k2, p2; rep from \* to 3 sts before m, k2, p1, sl m, k3.

**Rows 8 and 10:** Sl 1 pwise wyf, p2, sl m, k1, \*p2, k2, p2, k3; rep from \* to 3 sts before m, p2, k1, sl m, p2, k1.

**Row 12:** Sl 1 pwise wyf, p2, sl m, k1, \*p2, k1, yo, k1, p2, k1, drop next st and allow it to ravel down to yo six rows below, k1; rep from \* to 3 sts before m, p2, k1, sl m, p2, k1.

Repeat Rows 1–12 for pattern (do not repeat set-up row).

### Shrug

CO 42 sts. Work set-up row of drop-stitch patt with edging (see Stitch Guide)—46 sts. Do not rep set-up row. Rep Rows 1–12 for patt, and *at the same time*, beg with Row 8 of patt (RS row), inc 1 st at each side inside edging markers every 8th row 13 times, keeping center 40 sts in drop-stitch patt, maintaining 3 edging sts at each side as established, and working inc'd sts in k2, p2 rib—72 sts; 105 patt rows completed (including set-up row), ending with Row 8 of patt; piece should measure about 15 $\frac{1}{4}$ " (38.5 cm) from beg. Mark each end of last row for sleeve seam. Work Rows 9–12 of patt once, then rep Rows 1–12 fourteen times, then work Rows 1–9 once more—286 patt rows completed (including set-up row); piece should measure about 41 $\frac{3}{4}$ " (106 cm) from beg. Mark each end of last row for sleeve seam. Beg with next row (Row 10 of patt), dec 1 st each side inside edging markers every 8 rows 13 times, then work even to end with Row 5 of patt—46 sts rem; 390 rows completed (including set-up row), ending with Row 10 of patt; piece should measure about 56 $\frac{3}{4}$ " (144 cm) from beg. **Next row:** (RS) Sl 1 pwise wyf, p2, sl m, k1, \*p2, k1, drop next st off needle and allow it to ravel down to yo six rows below, k1, p2, k2; rep from \* to 3 sts before m, p2, k1, sl m, p2, k1—42 sts. On the next row, BO all sts in patt.

### Finishing

Weave in loose ends. With yarn threaded on a tapestry needle, sew sleeve seams from CO and BO ends to markers, or as required to achieve desired fit.



### MINIMALIST RIBBON SHRUG

SUSAN STERNLIEB,  
EDITORIAL ASSISTANT

I chose simple stockinette stitch to show this ribbon yarn to advantage. The slightly flared three-quarter-length sleeves are complemented by garter stitch detailing at the ends. Wear it with a silk blouse for an elegant look.

**Finished Size** 16 $\frac{1}{4}$ " (41.5 cm) wide at center back and 54" (137 cm)

long from cuff to cuff.

**Yarn** Colinette Giotto (50% cotton, 40% rayon, 10% nylon; 157 yd [144 m]/100 g): #148 caramel, 3 skeins.

**Needles** Sizes 10 $\frac{1}{2}$  (6.5 mm) and 11 (8 mm): straight. Adjust needle size if necessary to obtain the correct gauge.

**Notions** Tapestry needle.

**Gauge** 12 sts and 20 rows = 4" (10 cm) in St st on smaller needles.

### Shrug

With larger needles, CO 49 sts. Knit 15 rows, ending with a RS row—8 garter ridges. Cont as foll:

**Row 1:** (WS) K2, p45, k2.

**Row 2:** Knit.

Rep these 2 rows 5 more times—piece should measure about 5" (12.5 cm) from CO. Change to smaller needles and cont as established until piece measures 49" (124.5 cm) from CO, or 5" (12.5 cm) less than desired total length, ending with Row 2 of patt. Change to larger needles and cont as established for 11 more rows, ending with Row 1 of patt. Knit 15 rows. BO all sts loosely.

### Finishing

Fold rectangle in half with RS facing each other. With yarn threaded on a tapestry needle, sew from each cuff towards the center for 14" (35.5 cm) for sleeves, leaving center 26" (66 cm) open. Weave in loose ends. Block lightly.



### FLOWER POWER SHRUG

SANDI WISEHEART,  
MANAGING EDITOR

Luscious and feminine, this mohair and silk yarn begged to become something special. I chose a traditional lace pattern simple enough for beginners, and knit it on big needles to give it a dose of modern flower power! The beads bring out the luster of the silk, and a knitted flower embellished with beads lends the final touch of glamorous fun. The back is worked first, and stitches are picked up on each side to work the sleeves in the round from shoulder to cuff. Then stitches are picked up around the entire inside edge and knit to form a ribbed border. Wear it with a little black dress to dance the night away, or toss it over a T-shirt and jeans anytime you want to shine.

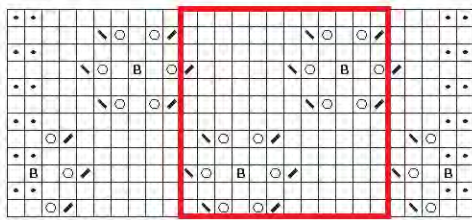
**Finished Size** 19 $\frac{1}{2}$ " (49.5 cm) high at center back, including ribbed edging, and 53 $\frac{1}{2}$ " (136 cm) long from cuff to cuff.

**Yarn** Naturally Kid et Soie (70% mohair, 20% silk, 10% NZ merino; 93 yd [85 m]/50 g): #305 mint, 6 balls. Yarn distributed by S.R. Kertzer.

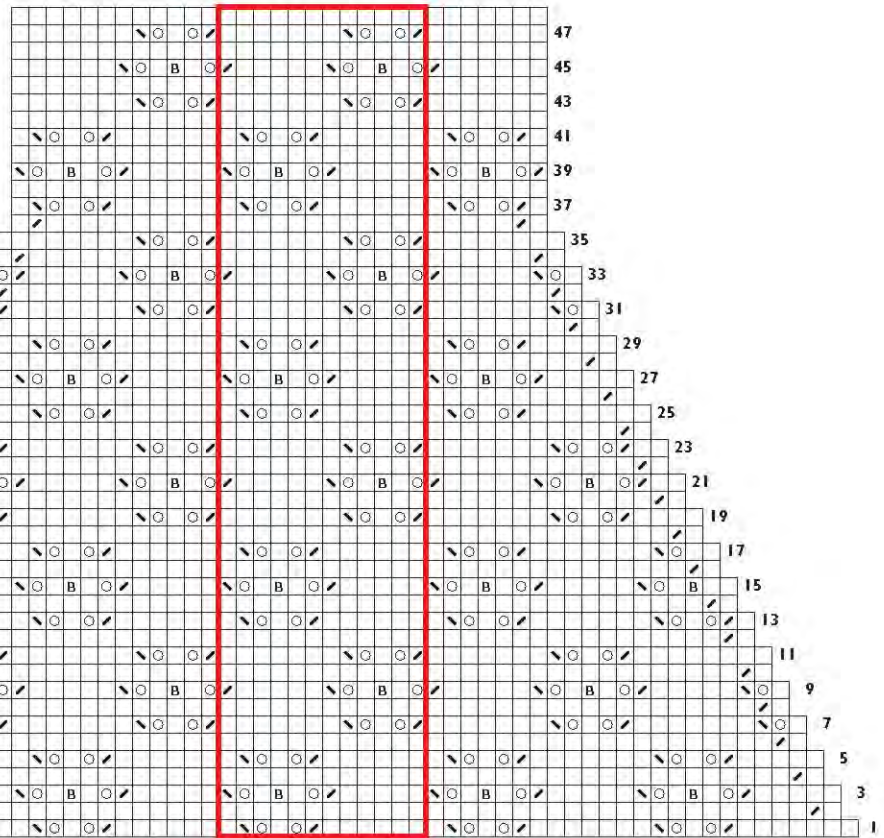
**Needles** Size 10 $\frac{1}{2}$  (6.5 mm); 16" (40-cm) and 24" (60-cm) circular (cir), Size 8 (5 mm); 24" (60-cm) cir and set of 4 double-pointed (dnp). It is helpful to have an extra 24" (60-cm) cir needle to use as a stitch holder. Adjust needle size if necessary to obtain the correct gauge.

**Notions** Markers (m); a few yards (meters) smooth waste yarn for provisional cast-on; size G/6 (4.25 mm) crochet hook; tapestry needle; about 300 size 6 glass seed beads; Big-Eye beading needle (avail-

## Body



## Sleeve



- k on RS; p on WS
- p on RS; k on WS
- / k2tog on RS; p2tog on WS
- \ ssk
- yo
- B place bead (see Stitch Guide)
- pattern repeat

able at craft and bead stores); safety pin.

**Gauge** 12 sts and 18½ rows = 4" (10 cm) in Body chart patt on larger needles.

### Stitch Guide

**String beads:** Before beginning to work with each new ball of yarn, place about 50 beads on yarn using Big-Eye needle. Slide about 10 beads at a time up toward the working end of the yarn in order to minimize wear and tear on the yarn. Keep pushing the remaining beads down the strand of yarn and out of your way as you go.

**Place bead:** Work to the location of the bead; slide bead up close to the right needle. Work the next st, indicated by the symbol B on the charts, making sure that the loop of the new st and the bead are both pulled through the old st. You may find it helpful to move the beads so that they sit on top of the right needle as you work the rest of the row or round. After working a few rows or rounds past the beads, gently adjust the beads so they all sit on the same "leg" of each st for a uniform effect.

### Body

Using the crochet chain method and waste yarn (see page 5), provisionally CO 75 sts with size 10½ (6.5 mm) longer cir needle. Do not join. Purl 1 WS row. Work Rows 1–12 of Body chart 6 times, then work Rows 1–6 once more—78 chart rows completed; piece should measure about 17" (43 cm) from beg. Place sts on spare cir needle or holder.

### Sleeves

With shorter size 10½ (6.5 mm) cir needle and RS facing, pick up and knit 79 sts evenly spaced along selvedge edge of body. Place marker (pm) and join for working in the rnd. Knit 1 rnd. Work Rnds 1–36 of Sleeve chart, dec 1 st each end of even-numbered rnds as shown on chart—43 sts rem. Work Rnds 37–48 two times—60 chart rnds completed; piece should measure about 13" (33 cm) from pick-up rnd. Knit 1 rnd. Change to size 8 (5 mm) dpn. Dec as foll:

**Rnd 1:** K1, p2tog, \*k1, p1; rep from \* to last 4 sts, sl 1, k2tog, pssso, p1—40 sts rem.

**Rnd 2:** K2tog, return resulting st to left needle, pass next st on left needle over this st, return st to right needle, work in established rib to end—38 sts rem.

**Rnd 3:** \*K1, p1; rep from \* to last 4 sts, sl 1, k2tog, pssso, p1—36 sts rem.

Work k1, p1 ribbing even for 5 rnds—piece should measure about 14¼" (36 cm) from pick-up rnd. BO all sts loosely in rib. Work second sleeve the same as the first, picking up sts along other body selvedge.

### Finishing

**Edging:** Place 75 held back sts onto longer size 10½ (6.5 mm) cir needle. Remove waste yarn from provisional CO and place exposed live sts onto the same cir needle, pm at right underarm (end of rnd), and join—150 sts total. Knit 2 rnds even. Change to size 8 (5 mm) cir needle. Work k1, p1 rib for 6 rnds. BO all sts loosely in rib. Weave in loose ends. Block lightly by misting with

water and patting into shape.

**Flower:** With size 8 (5 mm) cir needle, CO 49 sts with beaded strand of yarn. Do not join.

**Rows 1, 3, and 5:** (WS) Purl.

**Row 2:** K3, \*yo, k2, ssk while placing a bead in the new st, k2tog while placing a bead in the new st, k2, yo, k1; rep from \*, ending last rep k2 instead of k1.

**Row 4:** K3, \*yo, k2, ssk, k2tog, k2, yo, k1; rep from \*, ending last rep k2 instead of k1.

**Row 6:** \*K1, sl 1, k2tog, pss0, k1, k2tog, return last st to left needle, pass next st on left needle over it, return st to right needle; rep from \* to last st, k1—25 sts rem.

**Row 7:** \*P1, p3tog; rep from \* to last st, p1—13 sts rem.

**Row 8:** \*K2tog; rep from \* to last st, k1—7 sts rem.

Cut yarn, leaving a 16" (40.5-cm) tail. Thread tail on tapestry needle, gather up rem sts, pull tight, and fasten off. With yarn threaded on a tapestry needle, sew selvages tog, working from outer edge toward center to form flower. Push needle up through center of flower; remove tapestry needle from yarn and string 12 beads on yarn using Big-Eye beading needle. Remove beading needle, replace yarn on tapestry needle, and use small sts to secure beads in center of flower. Weave in loose ends. Pin or sew flower to collar of shrug.

### Crochet Chain (Provisional) Cast-On

With waste yarn and crochet hook, make a loose chain of about four stitches more than you need to cast on. With needle, working yarn, and beginning two stitches from end of chain, pick up and knit one stitch through the back loop of each crochet chain (Figure 1) for desired number of stitches. Work the piece as desired, and when you're ready to work in the opposite direction, pull out the crochet chain to expose live stitches (Figure 2).



Figure 1



Figure 2

### Cable Cast-On

Begin with a slipknot and one knitted cast-on stitch if there are no established stitches. Insert right needle between first two stitches on left needle (Figure 1). Wrap yarn as if to knit. Draw yarn through to complete stitch (Figure 2) and slip this new stitch to left needle as shown (Figure 3).



Figure 1



Figure 2



Figure 3

### Kitchener Stitch

**Step 1:** Bring threaded needle through front stitch as if to purl and leave stitch on needle.

**Step 2:** Bring threaded needle through back stitch as if to knit and leave stitch on needle.

**Step 3:** Bring threaded needle through same front stitch as if to knit and slip this stitch off needle. Bring threaded needle through next front stitch as if to purl and leave stitch on needle.

**Step 4:** Bring threaded needle through first back stitch as if to purl (as illustrated), slip this stitch off, bring needle through next back stitch as if to knit, leave this stitch on needle.

Repeat Steps 3 and 4 until no stitches remain on needles.





# RISK-FREE TRIAL OFFER

Discover knitwear designs that will capture your imagination.

You don't have to be a designer or a knitting pro to make beautiful knitted garments and accessories, and you don't have to hunt all over for inspiring designs.

From cover to cover, *Interweave Knits* magazine gives you great projects, from the beginner to the advanced. Every issue is packed full of captivating smart designs, step-by-step instructions, easy-to-understand illustrations, plus well-written, lively articles sure to inspire.

Take advantage of this special risk-free offer today!

[www.interweave.com/go/knitsJPDC6](http://www.interweave.com/go/knitsJPDC6)